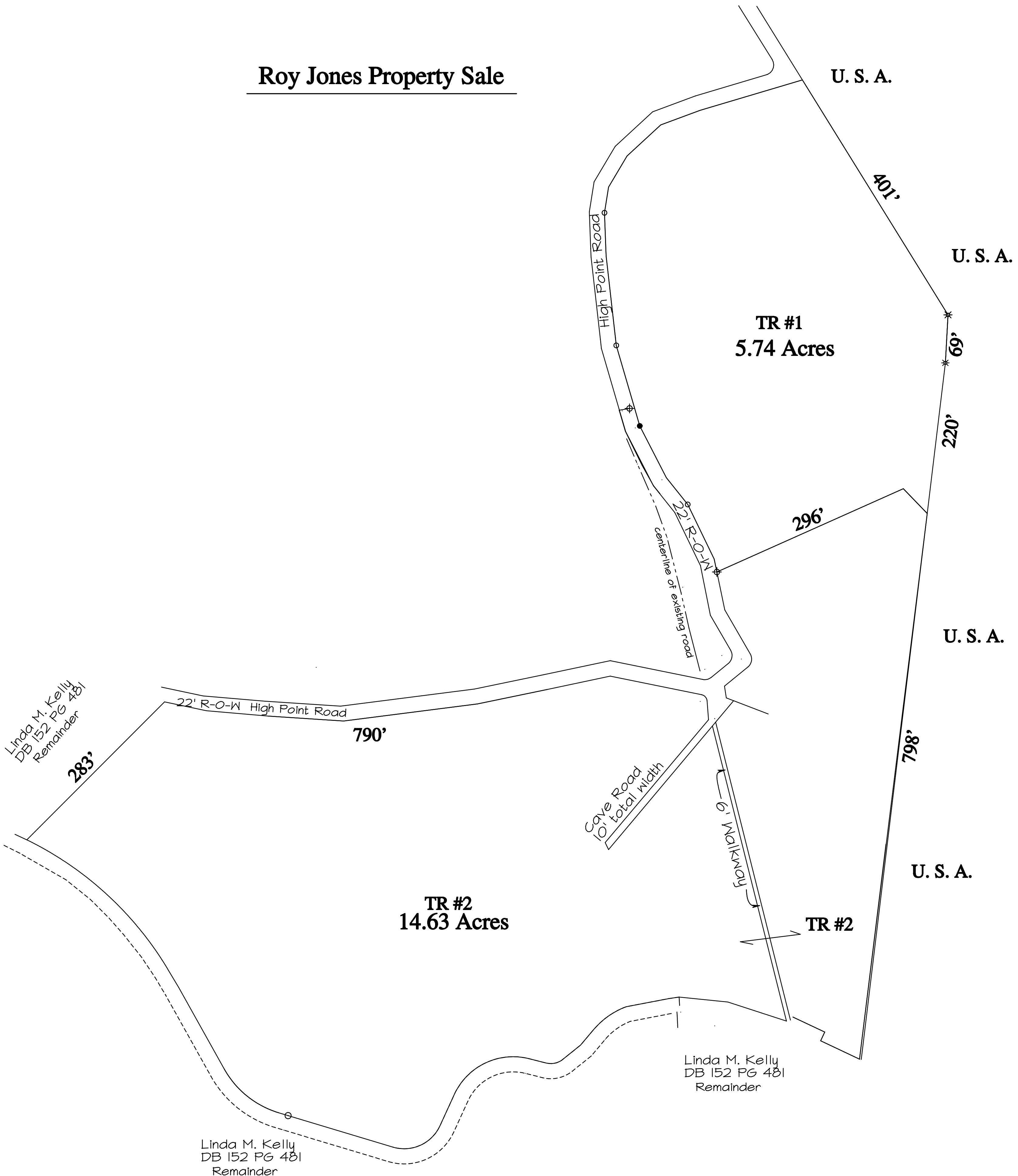


Roy Jones Property Sale



U. S. A.

U. S. A.

**TR #1**  
**5.74 Acres**

401'  
69'  
220'

296'

U. S. A.

Linda M. Kelly  
DB 152 PG 481  
Remainder

22' R-O-W High Point Road

790'

283'

Cave Road  
10' total width

9' Walkway

U. S. A.

**TR #2**  
**14.63 Acres**

**TR #2**

798'

Linda M. Kelly  
DB 152 PG 481  
Remainder

Linda M. Kelly  
DB 152 PG 481  
Remainder