

TRACT 1 CALLS WITH ACCESS CENTERLINE

NUM	BEARING	DISTANCE
L1	S09°30'01"W	8.25'
L2	S13°32'38"W	44.94'
L3	S34°47'09"W	65.87'
L4	S14°17'07"W	86.47'
L5	S10°48'33"W	138.32'
L6	S00°12'04"W	128.44'
L7	S17°13'36"E	78.42'
L8	S42°12'20"E	50.63'
L9	S45°21'39"E	100.87'
L10	S41°30'22"E	75.01'
L11	S31°15'02"E	74.46'
L12	S10°39'42"E	97.75'
L13	S04°36'07"E	91.43'
L14	S08°25'27"W	75.41'
L15	S02°50'46"W	55.04'
L16	S28°46'25"W	59.33'
L17	S60°40'55"W	37.18'
L18	S63°33'58"W	81.23'
L19	S82°25'29"W	66.45'
L20	S50°37'59"W	56.24'
L21	S69°20'21"W	194.10'
L22	S76°02'38"W	46.29'
L23	S79°13'35"W	100.10'
L24	S74°47'23"W	32.67'
L25	S16°02'51"E	20.30'

CALLS WITH ACCESS EASEMENT

NUM	BEARING	DISTANCE
L1	N73°06'54"E	101.79'
L2	N67°50'42"E	67.01'
L3	N75°39'17"E	120.90'
L4	N89°34'06"E	75.07'
L5	N70°51'08"E	15.13'
L6	N49°28'21"E	30.09'
L7	N38°04'35"E	42.17'
L8	N51°53'12"E	44.15'
L9	N55°49'49"E	49.78'
L10	N49°10'19"E	43.49'
L11	N44°14'36"E	71.16'
L12	N45°14'52"E	53.84'
L13	N34°07'06"E	32.27'
L14	N44°04'36"E	89.91'
L15	N43°21'31"E	71.77'
L16	N25°22'20"E	59.17'
L17	N23°59'28"E	16.89'

CALLS WITH ACCESS EASEMENT CROSSING TONY SLOAN LLC, ET AL.

NUM	BEARING	DISTANCE
L1	N58°26'35"W	18.40'
L2	N84°26'43"W	58.94'
L3	S79°11'09"W	80.03'
L4	S74°47'13"W	76.85'
L5	S82°18'07"W	71.32'
L6	S81°41'40"W	52.02'
L7	S82°40'49"W	73.23'
L8	N81°41'10"W	164.39'
L9	N71°02'01"W	73.02'
L10	N64°49'22"W	87.47'
L11	N59°23'13"W	106.68'
L12	N77°25'25"W	105.09'
L13	N73°01'13"W	121.14'
L14	N71°46'12"W	39.54'
L15	N72°59'44"W	114.83'
L16	N70°35'29"W	85.80'
L17	N70°35'29"W	55.96'
L18	N77°59'41"W	43.60'
L19	N72°22'28"W	171.60'
L20	N72°36'27"W	37.63'
L21	N65°50'04"W	85.19'
L22	N30°33'06"W	31.57'
L23	N14°24'07"W	45.85'
L24	N23°06'21"W	26.99'
L25	N17°23'20"W	87.44'
L26	N01°44'05"E	75.63'
L27	N34°06'21"W	130.63'
L28	N34°25'21"W	80.94'
L29	N29°23'35"W	52.27'
L30	N38°03'53"W	42.25'
L31	N20°21'58"W	15.39'
L32	N11°11'13"E	3.87'
L33	N23°59'28"E	27.50'

TRACT 1 CALLS

NUM	BEARING	DISTANCE
L1	S0°14'51"W	262.22'
L2	S71°25'14"E	125.82'
L3	N61°52'20"E	57.63'
L4	N58°12'45"E	116.25'
L5	N48°00'11"E	142.26'
L6	N21°59'47"E	12.56'

TRACT 2 CALLS WITH ACCESS CENTERLINE

NUM	BEARING	DISTANCE
L1	N16°02'51"W	20.30'
L2	N74°12'22"E	52.67'
L3	N79°13'35"E	100.10'
L4	N76°02'38"E	46.29'
L5	N65°20'21"E	55.73'
L6	S22°41'02"E	20.34'

TRACT 2 CALLS

NUM	BEARING	DISTANCE
L1	S19°59'04"W	90.90'
L2	N86°05'09"E	30.69'
L3	N60°48'44"E	88.54'
L4	S14°01'47"E	154.91'
L5	S07°00'33"E	128.17'
L6	S69°24'59"E	204.56'
L7	S66°08'37"E	191.75'
L8	S49°52'33"E	52.48'
L9	S58°21'06"W	112.36'

TRACT 3 CALLS

NUM	BEARING	DISTANCE
L1	N49°52'33"W	52.48'
L2	N66°08'37"W	163.72'
L3	N38°22'21"E	228.89'
L4	N74°37'37"E	285.39'
L5	S19°04'14"E	240.15'

TRACT 4 CALLS

NUM	BEARING	DISTANCE
L1	N19°04'14"W	240.15'
L2	S74°37'37"W	285.39'
L3	S38°22'21"W	228.89'
L4	N66°08'37"W	163.72'
L5	N49°52'33"W	52.48'

TRACT 5 CALLS

NUM	BEARING	DISTANCE
L1	N07°44'35"W	88.29'
L2	N09°34'02"E	177.48'

TRACT 6 CALLS

NUM	BEARING	DISTANCE
L1	S75°02'21"E	177.36'
L2	N53°57'40"E	81.99'
L3	S82°33'32"E	100.14'
L4	N71°02'15"E	67.03'
L5	N38°07'11"E	37.18'
L6	N69°15'39"E	84.17'
L7	N39°04'06"E	49.17'
L8	S06°58'46"W	147.42'
L9	S09°34'03"W	177.48'
L10	S07°44'35"E	70.52'
L11	S92°31'21"E	190.35'
L12	S60°28'01"W	80.91'
L13	S60°48'44"W	88.54'
L14	S85°05'09"W	30.69'
L15	N19°59'04"E	90.90'

TRACT 7 CALLS

NUM	BEARING	DISTANCE
L1	S22°36'26"E	200.90'
L2	N09°34'02"E	88.19'
L3	N06°58'46"E	147.42'

TRACT 8 CALLS WITH ACCESS CENTERLINE

NUM	BEARING	DISTANCE
L1	N86°16'59"W	19.60'
L2	N04°36'07"W	91.43'
L3	N10°39'42"W	97.75'
L4	N31°15'02"W	74.46'
L5	N41°36'21"W	53.61'
L6	N45°21'39"W	66.38'
L7	N44°38'21"E	20.00'

TRACT 9 CALLS WITH ACCESS CENTERLINE

NUM	BEARING	DISTANCE
L1	S44°38'21"W	20.00'
L2	N45°21'39"W	34.49'
L3	N42°12'20"W	50.63'
L4	N17°13'38"W	78.42'
L5	N00°12'04"E	128.44'
L6	N10°48'35"E	88.82'
L7	N14°17'07"E	86.47'
L8	N34°47'09"E	65.87'
L9	N13°32'38"E	44.94'
L10	N09°38'01"E	8.25'

TRACT 3 CALLS

NUM	ARC	RADIUS	BEARING	DISTANCE
C1	285.80'	2910.00'	S61°10'31"W	286.69'

TRACT 4 CALLS

NUM	ARC	RADIUS	BEARING	DISTANCE
C1	331.82'	2910.00'	S67°15'55"W	331.64'

TRACT 5 CALLS

NUM	ARC	RADIUS	BEARING	DISTANCE
C1	247.40'	1840.00'	S15°26'20"E	247.06'

TRACT 6 CALLS

NUM	ARC	RADIUS	BEARING	DISTANCE
C1	67.17'	1640.00'	S22°20'37"E	67.16'

TRACT 7 CALLS

NUM	BEARING	DISTANCE
L1	S22°36'26"E	200.90'
L2	N09°34'02"E	88.19'
L3	N06°58'46"E	147.42'

TRACT 8 CALLS WITH ACCESS CENTERLINE

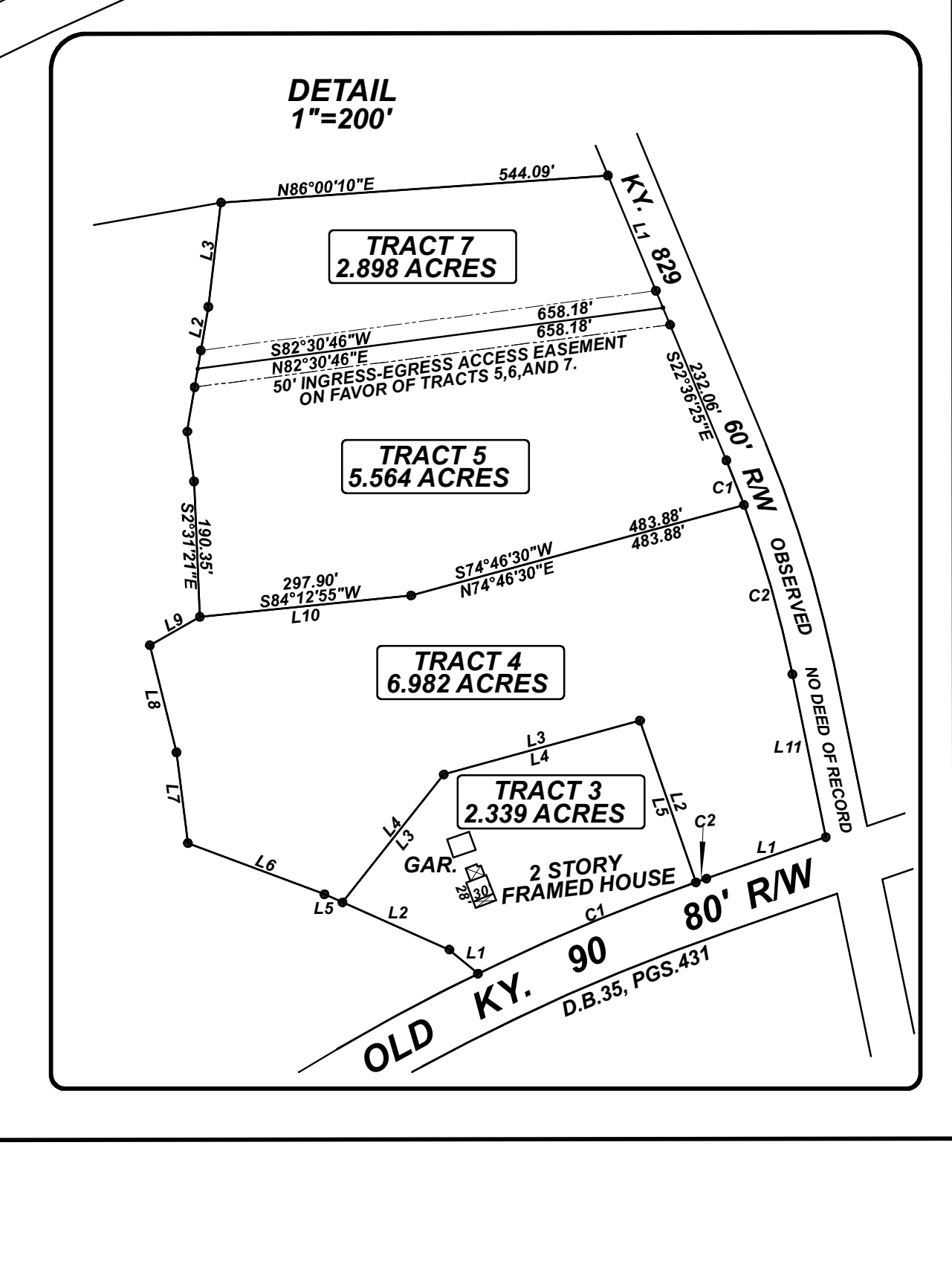
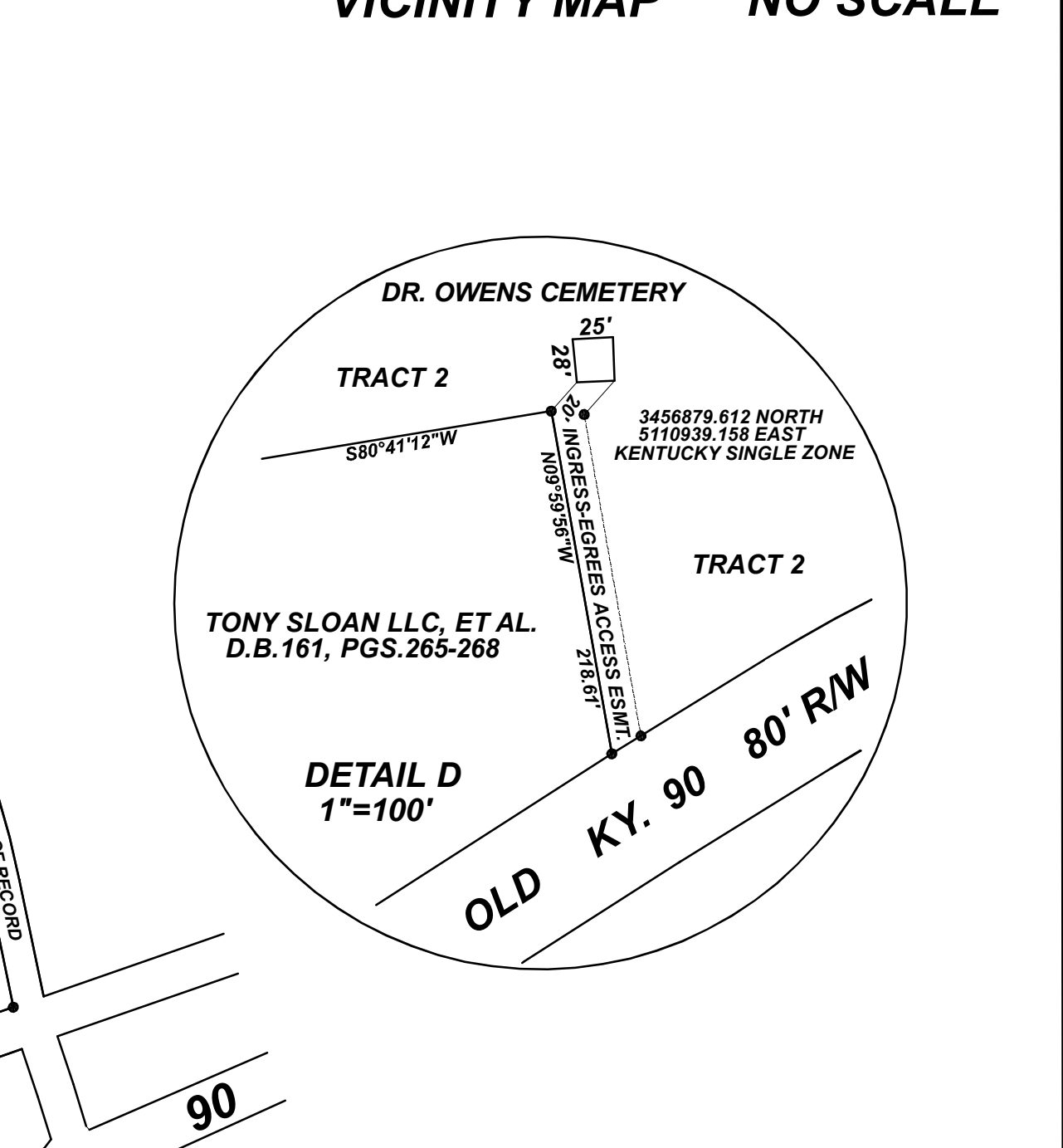
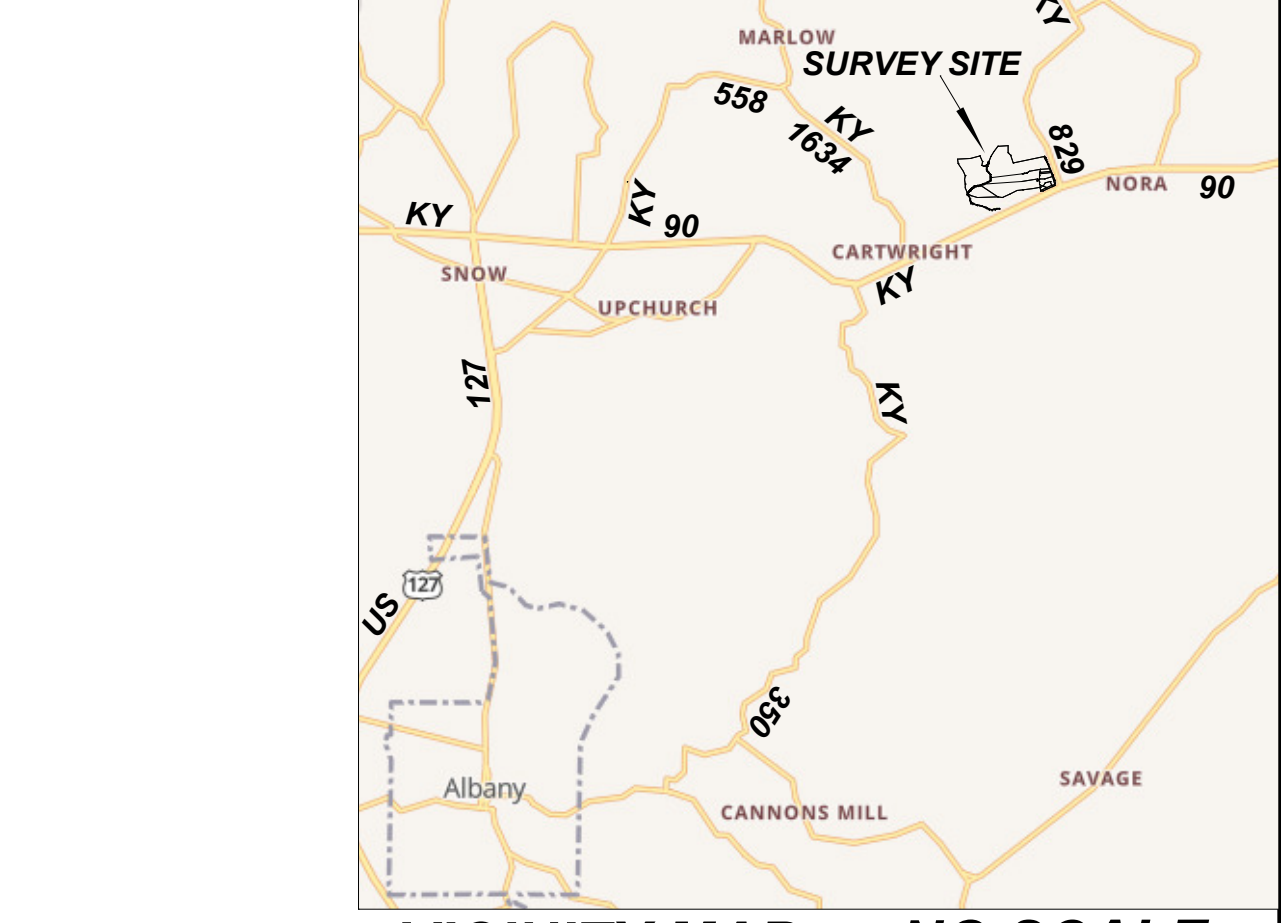
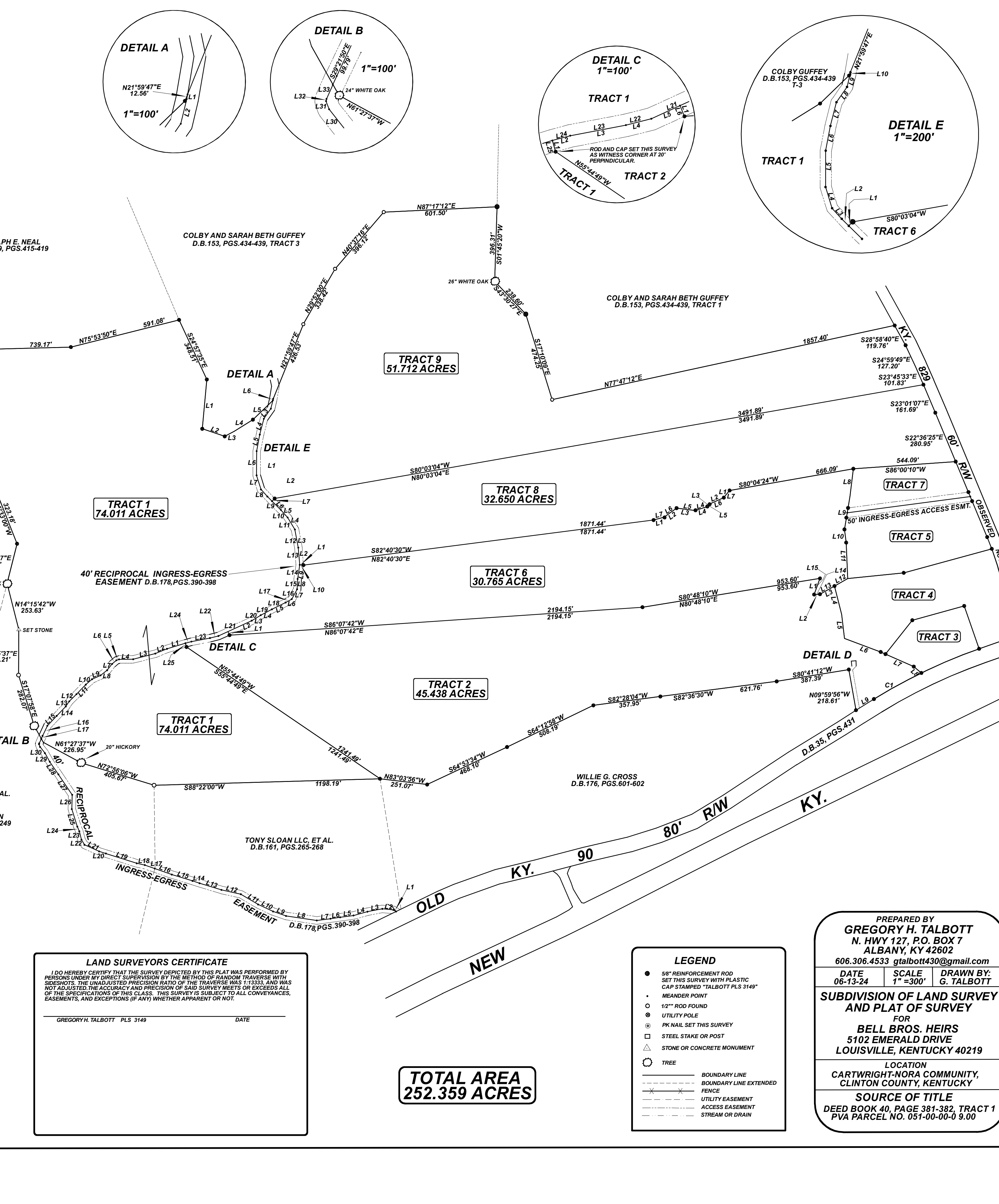
NUM	BEARING	DISTANCE
L1	S39°04'06"W	49.17'
L2	S66°15'39"W	84.17'
L3	S38°07'11"W	16.48'
L4	S71°02'15"W	67.03'
L5	N82°23'32"W	100.14'
L6	S53°57'40"W	81.99'
L7	S74°57'22"W	58.00'

TRACT 8 CALLS WITH ACCESS CENTERLINE

NUM	BEARING	DISTANCE
L1	S0°14'51"W	262.22'
L2	S71°25'14"E	125.82'
L3	N61°52'20"E	57.63'
L4	N58°12'45"E	116.25'
L5	N48°00'11"E	142.26'
L6	N21°59'47"E	12.56'

TRACT 8 CALLS WITH ACCESS CENTERLINE

NUM	BEARING	DISTANCE
L1	N16°02'51"W	20.30'
L2	N74°12'22"E	52.67'
L3	N79°13'35"E	100.10'
L4	N76°02'38"E	46.29'
L5	N65°20'21"E	55.73'
L6	S22°41'02"E	20.34'



LAND SURVEYORS CERTIFICATE

I DO HEREBY CERTIFY THAT THE SURVEY DEPICTED BY THIS PLAT WAS PERFORMED BY PERSONS UNDER MY DIRECT SUPERVISION BY THE METHOD OF RANDOM TRAVERSE WITH SIGHTS. THE UNADJUSTED PRECISION RATIO OF THE TRAVERSE WAS 1:1333, AND WAS NOT ADJUSTED. THE ACCURACY AND PRECISION OF SAID SURVEY MEETS OR EXCEEDS ALL OF THE SPECIFICATIONS OF THIS CLASS. THIS SURVEY IS SUBJECT TO ALL CONVEYANCES, EASEMENTS, AND EXCEPTIONS (IF ANY) WHETHER APPARENT OR NOT.

GREGORY H. TALBOTT PLS 3149 DATE _____

LEGEND

- 5/8" REINFORCEMENT ROD SET THIS SURVEY WITH PLASTIC CAP STAMPED "TALBOTT PLS 3149"
- MEANDER POINT
- 1/2" ROD FOUND
- UTILITY POLE
- PK NAIL SET THIS SURVEY
- STEEL STAKE OR POST
- STONE OR CONCRETE MONUMENT
- TREE
- BOUNDARY LINE
- BOUNDARY LINE EXTENDED
- FENCE
- UTILITY EASEMENT
- ACCESS EASEMENT
- STREAM OR DRAIN

PREPARED BY
GREGORY H. TALBOTT
N. HWY 127, P.O. BOX 7
ALBANY, KY 42602
606.306.4533 gtbaltott430@gmail.com

DATE 06-13-24 SCALE 1"=300' DRAWN BY G. TALBOTT

SUBDIVISION OF LAND SURVEY AND PLAT OF SURVEY
FOR
BELL BROS. HEIRS
5102 EMERALD DRIVE
LOUISVILLE, KENTUCKY 40219

LOCATION
CARTWRIGHT-NORA COMMUNITY,
CLINTON COUNTY, KENTUCKY

SOURCE OF TITLE
DEED BOOK 40, PAGE 381-382, TRACT 1
FVA PARCEL NO. 051-00-00-9.00

GENERAL NOTES

REFERENCE BEARING:
THE BEARINGS FOR THIS SURVEY WERE ESTABLISHED BY UTILIZING A DUAL FREQUENCY NET-WORK RTK ROVER TO OBTAIN STATISTICAL DATA ON CONTROL POINTS FOR A REFERENCE BEARING. BEARINGS ARE GRID NORTH.

RTK NOTE:
A CARLSON B7X GPS DUAL FREQUENCY NETWORK BASE AND ROVER WAS USED IN THIS SURVEY. THE COORDINATE SYSTEM IS KENTUCKY SINGLE ZONE STATE PLANE (NAD 83-2011). GRID IS 12S-NAD83. THE COMBINED SCALE FACTOR OF THE SURVEY MEETS OR EXCEEDS ALL OF THE SPECIFICATIONS OF THIS CLASS. THE PERCENTAGE OF WORK OBTAINED BY GPS WAS APPROXIMATELY 30%.

MONUMENT NOTES:
UNLESS STATED OTHERWISE, ANY "ROD" SHOWN HEREON IS A 3/8" DIAMETER REINFORCEMENT ROD EIGHTEEN (18) INCHES IN LENGTH WITH A YELLOW PLASTIC CAP STAMPED "TALBOTT PLS 3149". ALSO, ANY TREE HEREON USED AS A NEW CORNER IS, UNLESS OTHERWISE STATED, IS IN SOUND CONDITION AND WILL BE MARKED WITH SETS OF THREE NEW MARKS ABOUT CHEST HIGH ON EACH PROPERTY LINE SIDE OF SAID TREE.

SURVEY CLASSIFICATION:
THIS SURVEY AND PLAT MEETS OR EXCEEDS THE TECHNICAL STANDARDS FOR A CLASS "B" SURVEY FOR RURAL LAND IN ACCORDANCE WITH 201 KAR 18.150.

UTILITIES:
UTILITIES SHOWN HEREON WERE LOCATED FROM FIELD EVIDENCE, UTILITY RECORDS, AND OTHER SOURCES. OTHER UTILITIES MAY EXIST, AND MAY OR MAY NOT BE OF RECORD. PRIOR TO AN EXCAVATION OR CONSTRUCTION, CALL KENTUCKY UNDERGROUND (811) FOR UTILITY LOCATION VERIFICATION.

OTHER NOTES:
FIELD WORK RELATED TO THIS SURVEY WAS COMPLETED ON THE 14TH DAY OF OCTOBER, 2023. SURVEY SITE IS LOCATED 6.1 MILES NORTHEAST OF TOWN SQUARE OF ALBANY, KY, IN THE CARTWRIGHT-NORA COMMUNITY OF CLINTON COUNTY, KENTUCKY. THIS SURVEY DOES NOT CERTIFY PROPERTY OWNERSHIP. THIS PROPERTY IS NOT IN A FLOOD HAZARD ZONE.

GRAPHIC SCALE (FEET)

0 150 300 600